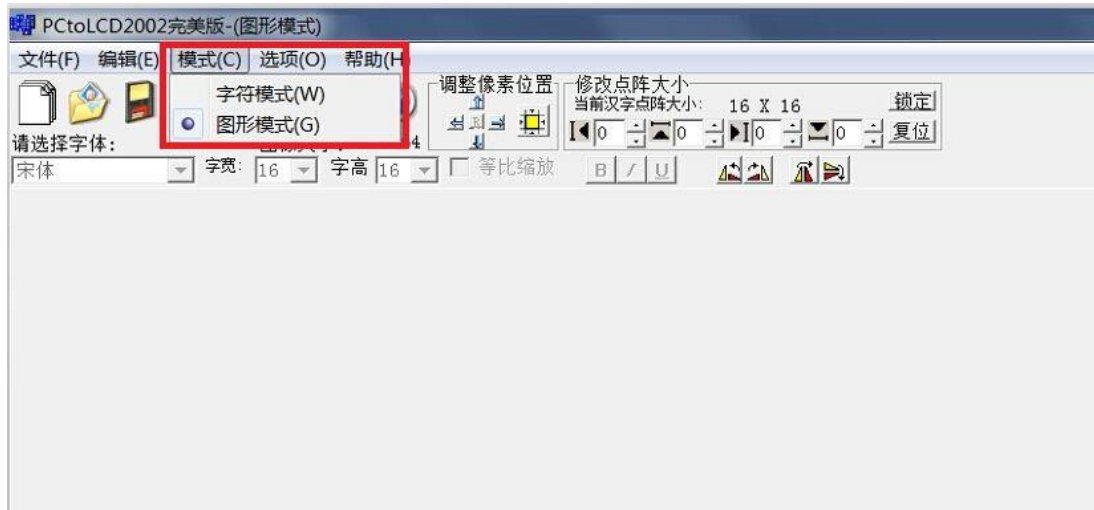
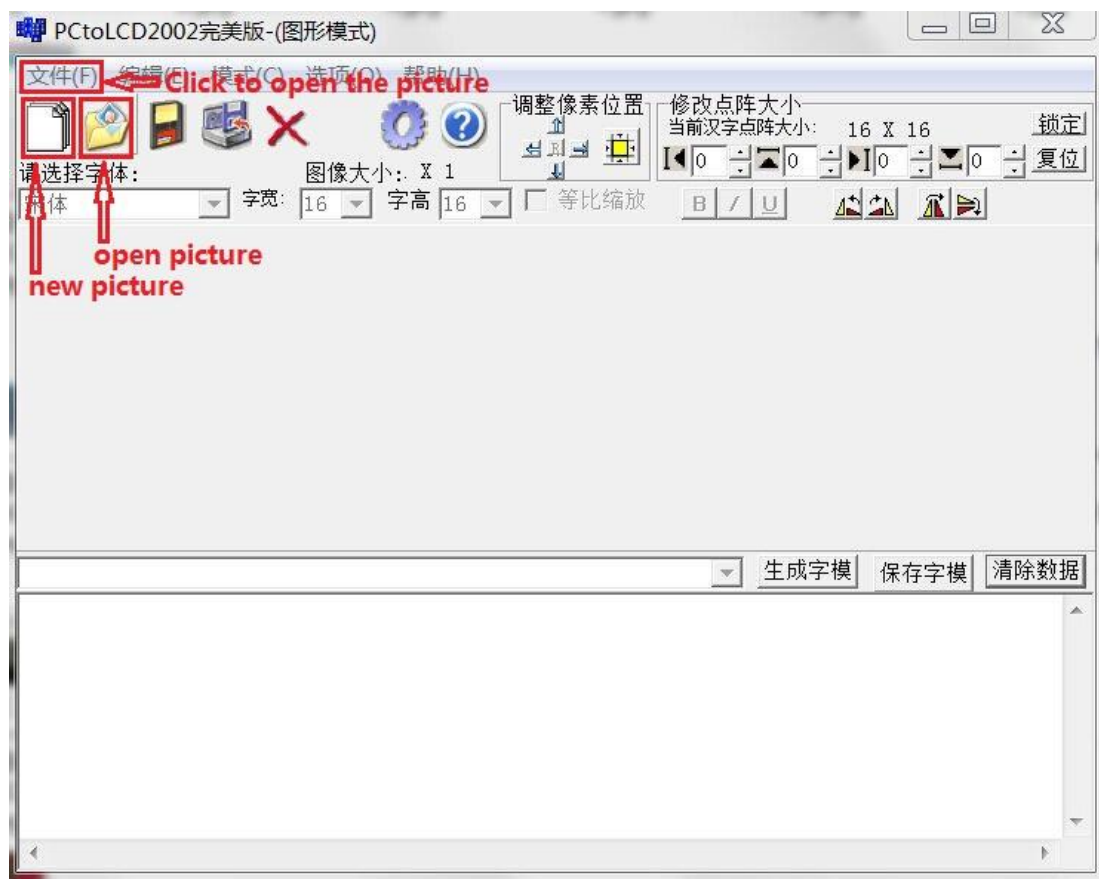


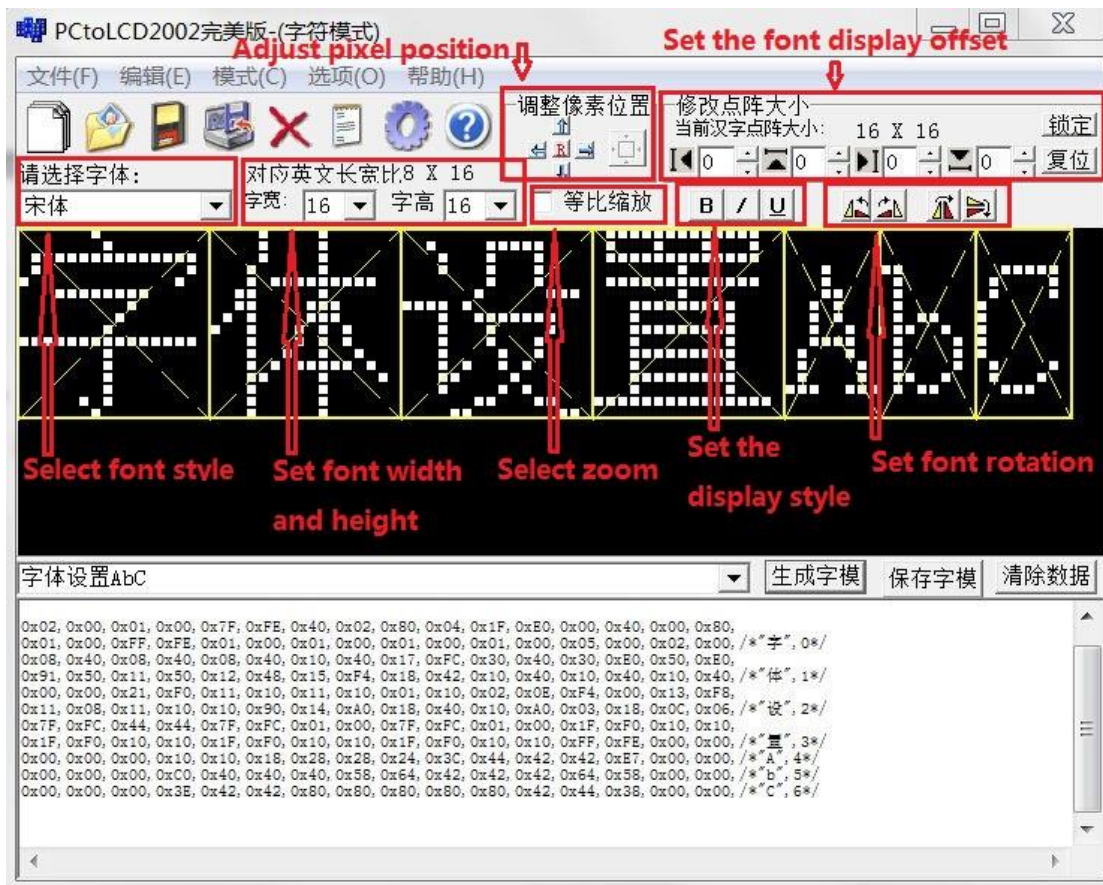
1. Open the PCtoLCD2002 software and select the mode according to your needs. (If you need to display Chinese and English or symbols, select the character mode. If you need to display the BMP monochrome picture, select the graphic mode), as shown below:



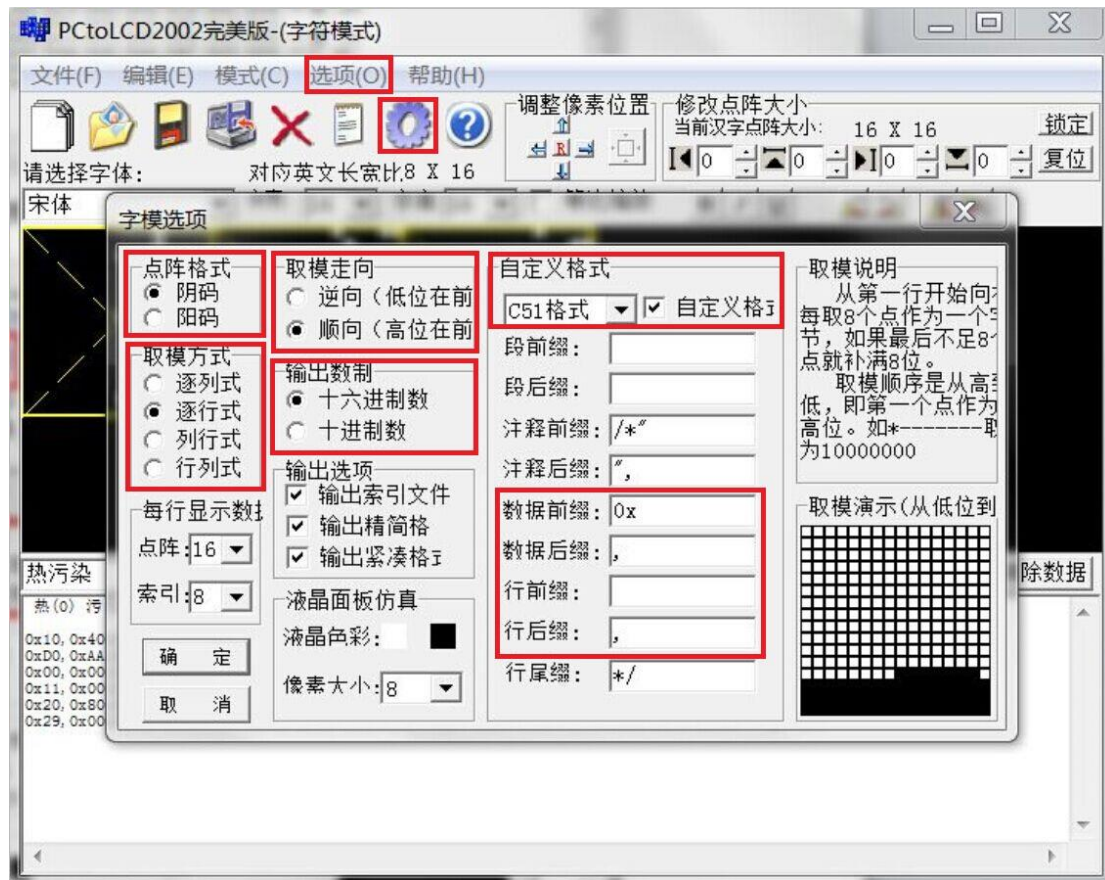
2. If you choose graphics mode, there are three ways to process the image (as shown below):
  - A. Click File -> Open to open the existing BMP monochrome image
  - B. click the open picture button to open the existing BMP monochrome picture
  - C. Click the New Picture button to set the width and height to create a new monochrome BMP image.



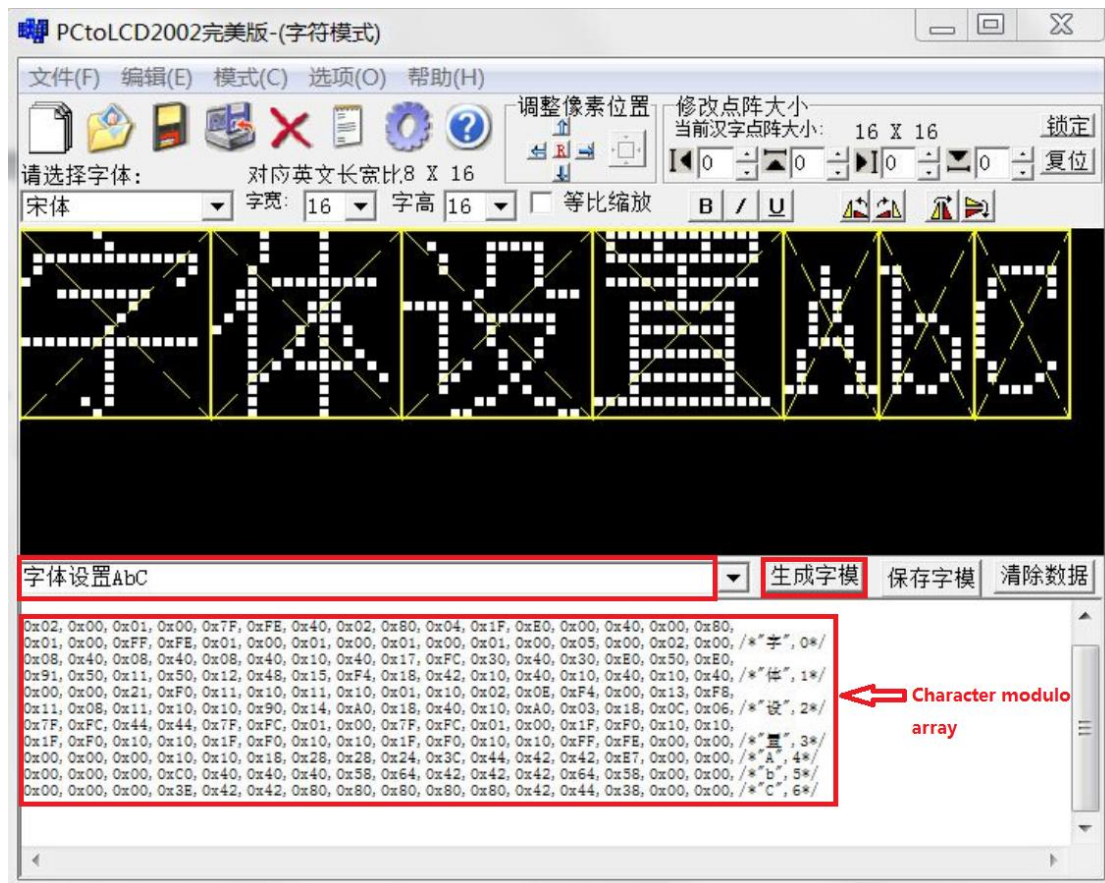
3. If you select the character mode, you can set the font as shown below:



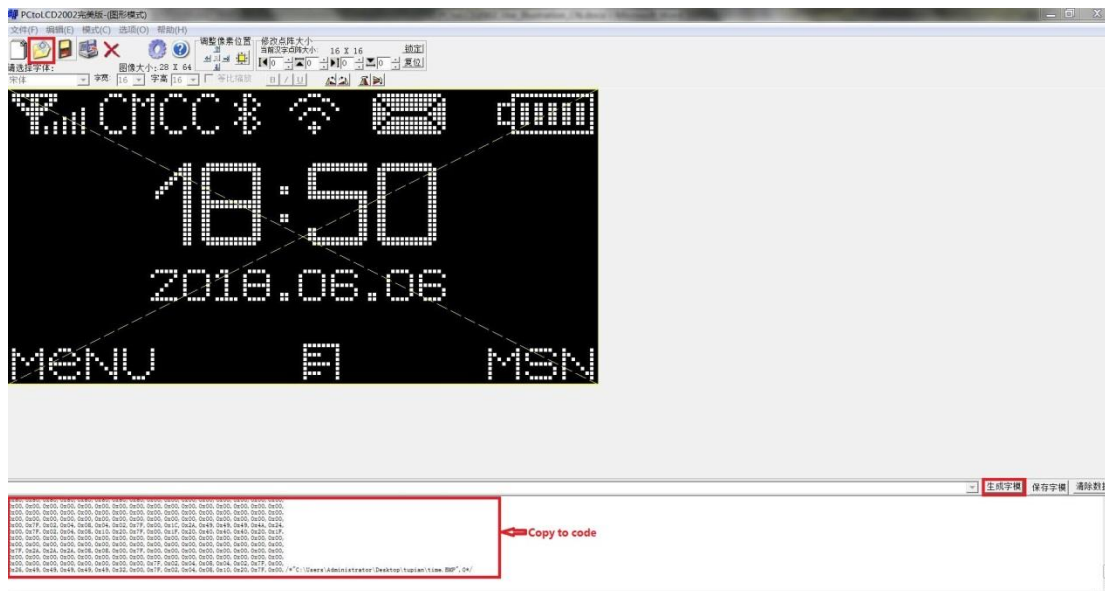
4. Click the option or the gear icon to perform the modulo setting, as shown below:



5. After the setting is completed, if the character is modulo, first input the modulo content, and then click the generated font to copy the generated array into the code, as shown below:



- if the graphics modulo, open a BMP monochrome picture, then click on the generated font, copy the generated array into the code, as shown below:



- Different methods of modulo, the method of function processing in the code is also different.